

CUT-RESISTANT

M-PACT[®] CR5A3



CR5A3

NEW! ANSI CUT

D30[®]
.....



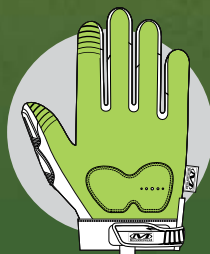
CUT-RESISTANT HAND PROTECTION

The Cut M-Pact[®] CR5A3 protects working hands with CE level 5 and ANSI A3 cut resistance in the workplace. The palm and fingers are protected by an internal layer of high-tenacity Armortex[®] to prevent abrasions and lacerations when working with sharp tools and sharp materials. Sonic welded Thermoplastic Rubber (TPR) protects the top of the hand from crushing and pinching injuries. D30[®] technology in the palm absorbs and dissipates high-impact energy to reduce hand fatigue as the day goes on. Visible hands are safe hands so we incorporated fluorescent, ANSI-107 compliant materials to improve visual awareness in the workplace.



IMPACT PROTECTION

Thermoplastic Rubber (TPR) extends from the knuckle guard to the tip of each finger to reduce impact injuries.



CUT RESISTANT

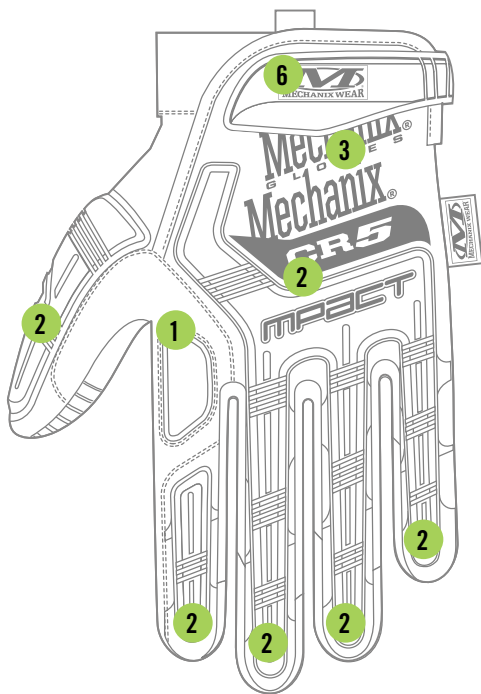
Internal layer of Armortex[®] delivers CE level 5 and ANSI A3 cut resistance to the palm and fingers.

CUT-RESISTANT M-PACT[®] CR5A3

AVAILABLE COLORS

SMP-C91 HI-VIZ YELLOW

XXXS	XXS	XS	S	M	L	XL	XXL	XXXL
05	06	07	08	09	10	11	12	13



FEATURES

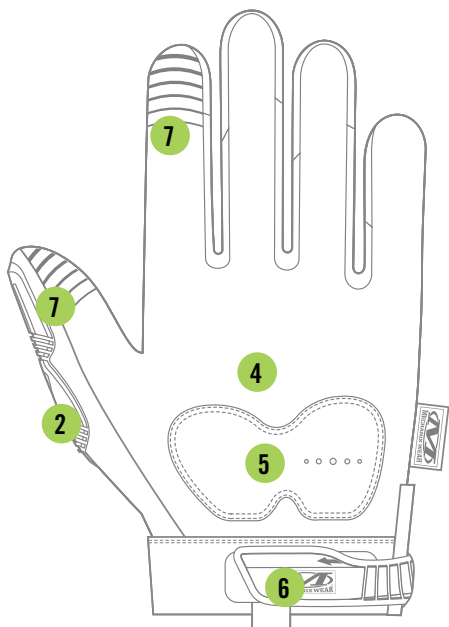
1. Impact Guard™ protects first knuckle with EVA foam padding.
2. Thermoplastic Rubber (TPR) knuckle guard and pinch-point finger protection.
3. ANSI-107 compliant TrekDry® material helps keep hands cool and comfortable.
4. Synthetic leather palm with an internal layer of Armortex® delivers CE level 5 and ANSI A3 cut resistance.
5. D30® palm padding absorbs and dissipates high-impact energy through the palm.
6. Thermoplastic Rubber (TPR) closure with hook and loop provides a secure fit.
7. Embossed and textured index finger and thumb provides added grip.

CERTIFICATIONS



INTENDED USES

- Sharp Tool & Material Handling



FURTHER INFORMATION AVAILABLE AT:

Ref: M-Pact® CR5A3

USA
1-800-222-4296
CANADA
1-877-278-5822

Mechanix Wear, Inc.
28525 Witherspoon Parkway
Valencia CA 91355
www.mechanix.com

Product is imported